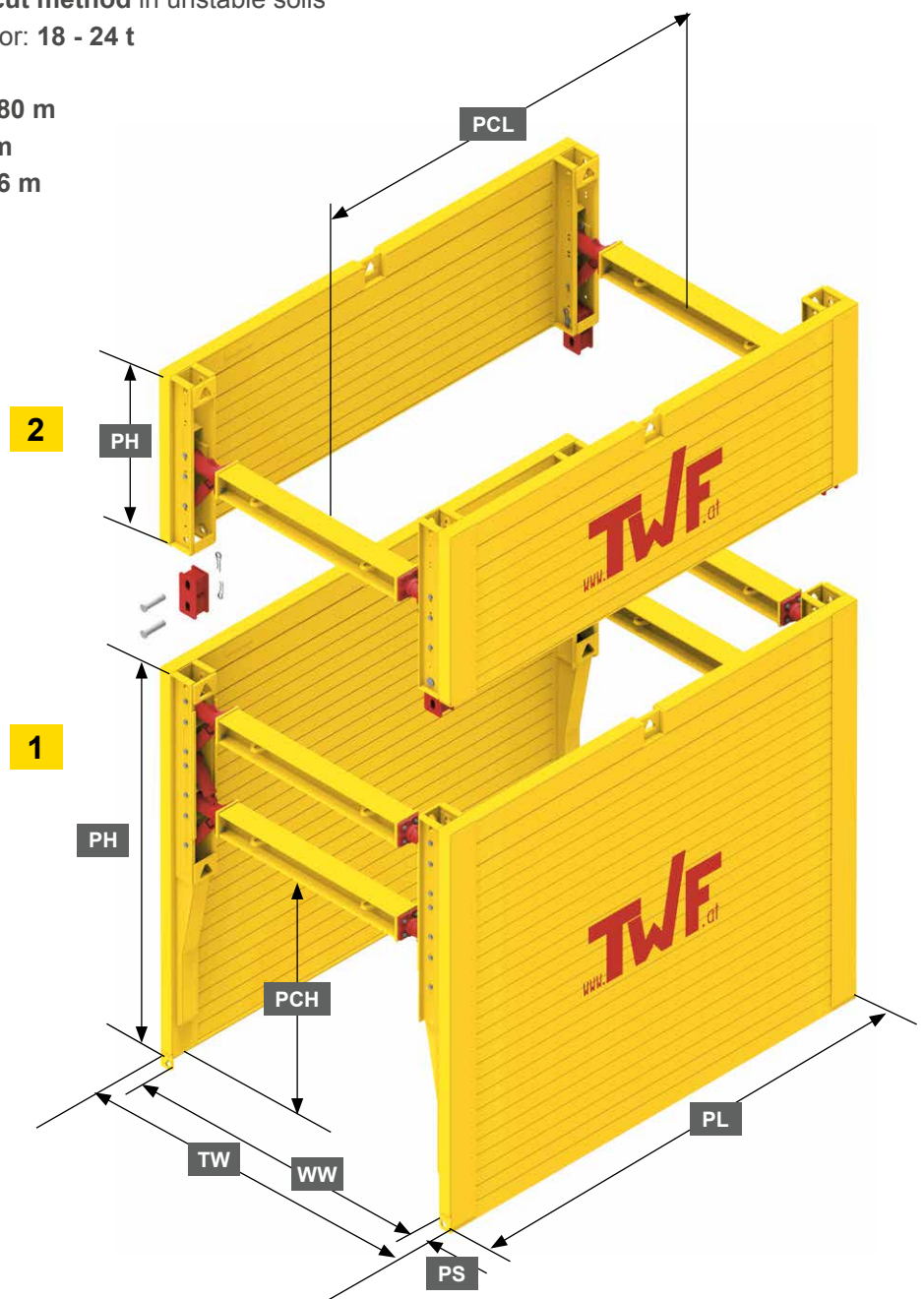


► TWF Trench Shoring Systems

■ XL-BOX Type 690

- Cost-efficient construction processes with the highest degree of safety and high pipe clearance at trench depths up to 5,80 m.
- Installation by **lower and cut method** in unstable soils
- Mobile- or crawler excavator: 18 - 24 t
with top element: 22 - 30 t
- Maximum trench depth: 5,80 m
- Trench width: 0,97 - 6,05 m
- Pipe clearance height: 2,06 m



1	Base element
2	Top element

PH	Panel height
TW	Trench width
WW	Working width
PT	Panel thickness
PCH	Pipe clearance height
PL	Panel length
PCL	Pipe clearance length



► XL-BOX Type 690

Element	Panel length PL (m)	Panel height PH (m)	Panel thickness PT (mm)	PC-length PCL (m)	PC-height PCH (m)	Char. system resistance R_k (kN/m ²)	Weight c/w spindle (kg/box)
1	2,00	3,15	100	1,60	2,06	40	2204
2		1,32					1102
1	2,50	3,15	100	2,10	2,06	40	2470
2		1,32					1248
1	2,90	3,15	100	2,50	2,06	40	2682
2		1,32					1364
1	3,40	3,15	100	3,00	2,06	40	2948
2		1,32					1508
1	3,70	3,15	100	3,30	2,06	40	3108
2		1,32					1596

► Other lengths on request!

■ Strut Extensions HEB 180

- Strut extension lengths:
0,275 | 0,550 | 1,100 | 1,650 | 2,200 m
Customised lengths on request

