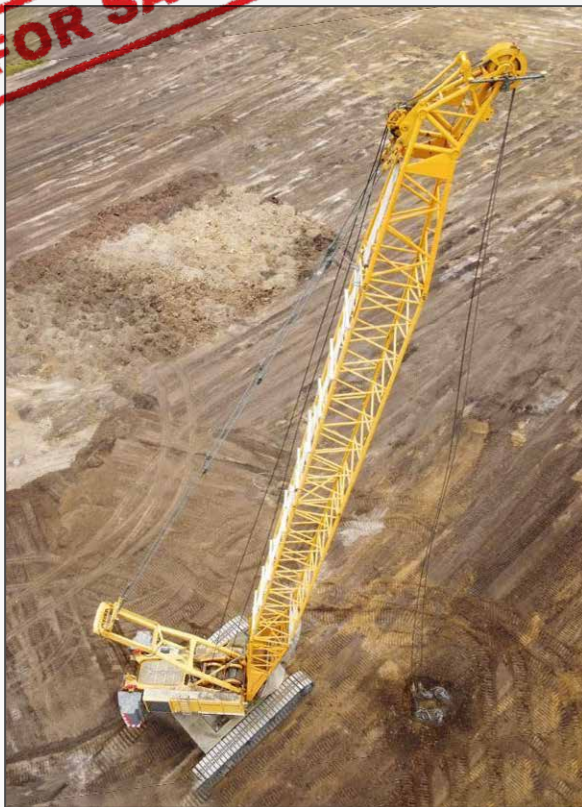


LIEBHERR

FOR SALE!



LIEBHERR HS 895 HD CRAWLER CRANE with DC KIT

➤ **1 Liebherr Crawler Crane HS 895 HD**
Year 2007, About 11.500 working hours

Diesel engine: D2842LE – 670kW
55 to Ballast
1100 floor slabs
2 x 32 to free-fall winches (36mm rope)
Boom foot 7,0m
Boom head 7,0m
2 x 11,7m outrigger Z-piece

with following options included:

- GSM modern
- Swing 3
- Diagonal protection set
- Lifting the cable
- Self-loading system (ballast/jack-up)
- winding equilibrium
- Anti-impact protection
- Laser glass
- Cabin inclination
- Air conditioning
- Ram control for protection
- Master 4 control
- Fallback props

Liebherr checked, good working order !



Prior to Sales all machines will be **checked and tested** according to the **manufacturer's instructions**. §11 AM-VO

USED FOUNDATION EQUIPMENT