



## ABI MOBILRAM TM 14/17 B

### > 1 ABI Mobilram TM 14/17 B, year 2000

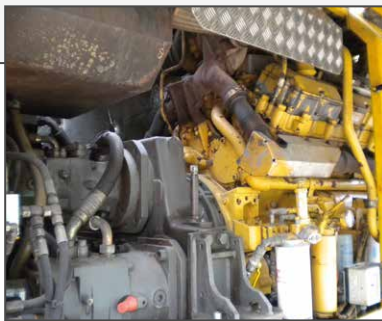
on base carrier Sennebogen SR 35 T  
with telescopic undercarriage  
Caterpillar diesel engine CAT C 3408  
414 kW Power  
about 16.000 working hours

ABI service winch 5 to, turnable  
Measuring control computer

### > 1 ABI Vibrator MRZV 925 VS, year 2004

with clamp and stander

**Condition: good working order!**



Prior to Sales all machines will be **checked and tested** according to the **manufacturer's instructions**. **§11 AM-VO**

# USED FOUNDATION EQUIPMENT